

# TAKING THE LEAD

IN COMMUNITY HEALTH



NORTHERN NEVADA  
  
**HOPES**

2022 ANNUAL REPORT

# Who We Are



Since 1997, Northern Nevada HOPES (HOPES) has been on the front lines of community health, caring for those with the fewest resources and options. During our 25 years we've served this community with passion and commitment, we haven't just grown larger, we've grown up.

From a single room HIV/AIDS clinic to a multi-clinic community health resource. From a staff that could fit in a renovated hotel room to a multidisciplinary team of nearly 250 care providers and staff. From a singular focus on HIV/AIDS care to comprehensive wrap-around care that includes primary care, behavioral health, case management, harm reduction and supportive housing.

With help from a passionate and committed donor community, we continue to grow and serve northern Nevada's most marginalized, overlooked and underserved with kindness and compassion.

## MISSION

We provide affordable, high-quality medical, behavioral health and support services for all.

## VISION

We strive to build a healthier community.


## VALUES

We value kindness, dignity, inclusion, creativity and adaptability.

**"I've been to many clinics in my life. I've never felt the way I do about HOPES. It's a warm feeling of love."**

— HOPES patient

# Who We Serve




**35% PATIENTS  
LIVING AT OR  
BELOW 138%  
OF THE FEDERAL  
POVERTY LEVEL**

(An individual earning less than \$14,657 a year)



**53% PATIENTS  
LIVING AT OR  
BELOW 200%  
OF THE FEDERAL  
POVERTY LEVEL**

(An individual earning around \$25,760 a year)



**12% PATIENTS  
EXPERIENCING  
HOMELESSNESS**



**“If it wasn’t for HOPES, I truly don’t know where I would be today. The care is outstanding and the caregivers know that people who come there mostly have very little income. They treat you with respect and dignity which makes a person feel like a *real* person.” –HOPES patient**



**“It’s my honor to be treated by such amazing and caring individuals who go above and beyond for the needs of their patients.”**

**—HOPES patient**

# What's Inside

2	Who We Are	18	Financials
3	Who We Serve	19	CEO Message
6	Hope Springs	20	HOPES Board of Directors
7	Community Wellness	21	Our Donors
8	Behavioral Health		
10	Gender & Sexual Health		
11	Harm Reduction		
12	Services		
14	2022 by the Numbers		



# Taking the Lead in Bridge Housing

As an organization, we are constantly evolving to better meet the needs of our community and this includes how we operate Hope Springs, our innovative bridge housing community. In 2022, we shifted our approach from 'housing first' to 'stabilization first,' recognizing that without individual stability, safe stable housing cannot fulfill its promise of improving health and well-being. We restructured staffing to incorporate more Peer Support Specialists and added a house manager. Most importantly, Hope Springs is now led by Licensed Clinical Social Workers, directing the program and supporting residents through a therapeutic approach.

The first few months a resident spends at Hope Springs now focus on stabilizing the individual through mental healthcare, which may include psychiatry and our Intensive Outpatient Program, substance use treatment and medical care. Once stabilized, we focus on support for independent living, including connecting residents to benefits, job training and resources. As they work toward program graduation, we focus on helping them find safe, permanent housing.



**In 2022, Hope Springs residents received 1,232 behavioral health visits, supporting our stabilization-first approach.**

## Services at Hope Springs Include:

**INTENSIVE CASE  
MANAGEMENT**

**MEDICAL  
SERVICES**

**WELLNESS  
SERVICES**

**IDENTIFYING  
PERMANENT HOUSING**

**BEHAVIORAL HEALTH  
SUPPORT**

**BENEFITS  
ASSISTANCE**

**WORKFORCE  
DEVELOPMENT**

**SUBSTANCE USE  
TREATMENT**

# Taking the Lead in Community Wellness



## Welcoming Northern Nevada's Only Pediatric Obesity Expert

In 2022, Dr. Steve Shane joined the HOPES Pediatric Team, offering expertise in nutrition and weight management to our youngest patients. As the only pediatrician in northern Nevada board certified in obesity medicine, Dr. Shane offers unparalleled insight for families with children who struggle with elevated weight.

Partnering with our onsite Registered Dietitian, Dr. Shane helps patients work toward achievable health and wellness goals. Dr. Shane was named 2022 Nevada Children's Champion by the Children's Advocacy Alliance (CAA) for his leadership in pediatric nutrition.

## Diabetes Management — Addressing a Chronic Community Issue

Rates of diabetes continue to grow year after year in our community, increasing 4% in 2021 alone. Diabetes is a serious chronic disease that can lead to heart disease, stroke, amputation and death. One of the most common

causes of diabetes is obesity, and as of 2022, 30% of adults in Washoe County were characterized as obese.

To address this persistent and escalating issue, our Chronic Disease team continues to improve our hypertension and diabetes prevention and management services. Improvements include expanded registered dietitians hours, retinopathy scans, self-management blood pressure education, comprehensive group classes, and monitoring and support to keep patients engaged with their care and working toward their health goals.

## Mpox — Responding to a Health Crisis

Northern Nevada HOPES partnered with the Washoe County Health District and other local, state and national healthcare partners to give patients access to monkeypox — now referred to as mpox — testing, vaccine, treatment and education.

HOPES staff also worked tirelessly in media interviews and at outreach events to reduce the stigma associated with mpox, often erroneously characterized as a “gay disease.” HOPES is one of the few places in northern Nevada offering mpox education, treatment and vaccination — providing Tecovirimat in our pharmacy, onsite testing and the JYNNEOS mpox vaccine.

Our concerted efforts and the resources we made available to the public helped keep Washoe County mpox case counts low with just 21 cases reported in 2022.

# Taking the Lead in Behavioral Health Care

## New Intensive Outpatient Program

For decades, HOPES has identified and filled the gaps in our community's medical and behavioral healthcare. In 2022, HOPES continued to fill those gaps with expanded mental health services, including our new Intensive Outpatient Program (IOP). This program is the first of its kind in northern Nevada to provide in-depth and comprehensive mental healthcare to those with Medicaid or no insurance – populations that we feel most need this care and, traditionally, have the least access to it.

Developed for adults experiencing behavioral, substance use or emotional challenges, HOPES' IOP provides a level

of care between traditional outpatient therapy and inpatient hospitalization. The program is tailored to meet each patient's unique needs, including individual and group therapy, and can support patients leaving inpatient hospitalization or residential care as they transition back into family and community life.

We're working to make this type of comprehensive treatment more accessible, so people struggling to find care can get the help, support and resources they need to improve the quality of their lives.



## New Bell Street Clinic

In 2022, HOPES expanded our ability to provide more primary medical care and behavioral health services through the opening of our new Bell Street Clinic, located right across the street from the Stacie Mathewson Wellness Center.

**“IOP was absolutely amazing. After losing my father, I thought I was abandoned, but instead I got another family that took me in unconditionally and saved my life. Thank you so much for believing in me.”** –HOPES patient & IOP graduate



## Peer Support Specialists: Making Meaningful Connections

Meeting the needs of our community has meant expanding our staff to serve more patients. Over the course of a single year, our team grew from 196 dedicated staff members to nearly 250 — a whopping 27.5%. This number included an increase in the number of HOPES Peer Support Specialists who are now active in all aspects of patient care, including behavioral health, Medication-Assisted Treatment, and residential treatment at Hope Springs.

The Peer Support Specialist is a non-clinical employee whose shared life experiences enable them to connect with patients as a fundamental part of their recovery. They also serve as a resource, connecting patients to other community services that support general wellness.



## MISSION

The MAT Program at Northern Nevada HOPES provides *compassionate, team-based treatment, to inspire hope and enhance quality of life, through the process of recovery.*

## Medication-Assisted Treatment

Our interdisciplinary Medication-Assisted Treatment (MAT) program has become the gold standard for effective treatment in our region. We have built a team of professionals with a broad range of training and experience who provide comprehensive and individualized treatment to our patients.

Our program is behavioral health focused and uses medication to support recovery for individuals struggling with alcohol or opioid dependence. Our harm reduction approach means we meet patients where they are in their recovery journey, and develop a holistic treatment plan based on each patient's specific goals.

Treatment plans may include individual or psychotherapy and utilize other services, such as our Intensive Outpatient Program and Hope Springs, to address individual needs.

# Taking the Lead in Gender and Sexual Health

## Dr. Barry Frank Family Funds Clinic Expansion

The most recent donation from generous donor Dr. Barry Frank has enabled us to both expand HOPES' Gender and Sexual Healthcare Clinic and solicit matching gifts for HOPES' Give OUT Day fundraising campaign.

Dr. Frank has been a philanthropic leader in our community for years and in 2020 he came to HOPES with a vision to help LGBTQ+ patients access services not typically provided at our health center. We are now better equipped to help our LGBTQ+ community with access to services that include surgery support, legal assistance, voice coaching, cosmetic services and behavioral health support.

### Serving the transgender community:

440

TRANS-IDENTIFYING  
PATIENTS SERVED

14

ENROLLED IN INTENSIVE  
OUTPATIENT PROGRAM

2,115

MEDICAL  
APPOINTMENTS

115

PEER SUPPORT  
ENCOUNTERS

1,404

MENTAL  
HEALTH VISITS



**“I was desperately trying to find resources for my transgender daughter who was having addiction and dysphoria issues. The HOPES community was so accepting and gracious, but — more importantly — they were kind. HOPES gave my daughter and myself “hope” when we were lost, scared, and confused. It truly is a special place.”**

—Valerie, Mother of HOPES patient

# Taking the Lead in Harm Reduction

## Change Point

Change Point is HOPES' Harm Reduction program and is open to all members of the community. It includes the Syringe Services Program (SSP), free fentanyl test strips and Narcan kits, and Sexual Health Services, including walk-in sexually transmitted infection clinics, PrEP and PEP clinics.

In 2022, Change Point partnered with the Overdose Data to Action program run by the University of Nevada, Reno, School of Public Health. The University's purchase of a mass spectrometer offers us a great resource for assessing drug use in our community. As part of our SSP program, we use the spectrometer to test

used syringes returned to Change Point to determine which drugs are prevalent in the community. This information enables the School of Public Health to get ahead of community drug use and plan effective treatment and overdose care.

Another benefit of this partnership is that it connects Change Point with other groups in the community, supporting our outreach efforts. The work we do through Change Point and HOPES' Medication-Assisted Treatment program profoundly impacts community health, reducing incidence of overdose and connecting individuals with substance use disorders to care and services.



## 2022 Change Point Highlights

Partnership with  
Overdose Data to Action

—

Site for JYNNEOS mpox  
vaccine

—

Addition of Peer Support  
Specialists

—

Expanded access for  
Change Point van (mobile  
needle exchange, rapid  
HIV and Hep C testing)

# Taking the Lead in Comprehensive, Community-Based Care



ADULT & PEDIATRIC  
PRIMARY CARE

WELLNESS &  
NUTRITION

HEALTH  
EDUCATION

ADULT & PEDIATRIC  
COUNSELING & PSYCHIATRY



SUBSTANCE USE  
COUNSELING

MEDICATION DELIVERY

ONSITE  
PHARMACY

HIV & HEPATITIS C CARE  
& PREVENTION

HOUSING SUPPORT  
& PROGRAMS

REPRODUCTIVE &  
WOMEN'S HEALTH SERVICES

ONSITE X-RAY &  
ULTRASOUND



INTENSIVE OUTPATIENT  
PROGRAM

CHRONIC DISEASE  
MANAGEMENT

ONSITE LAB



CASE  
MANAGEMENT

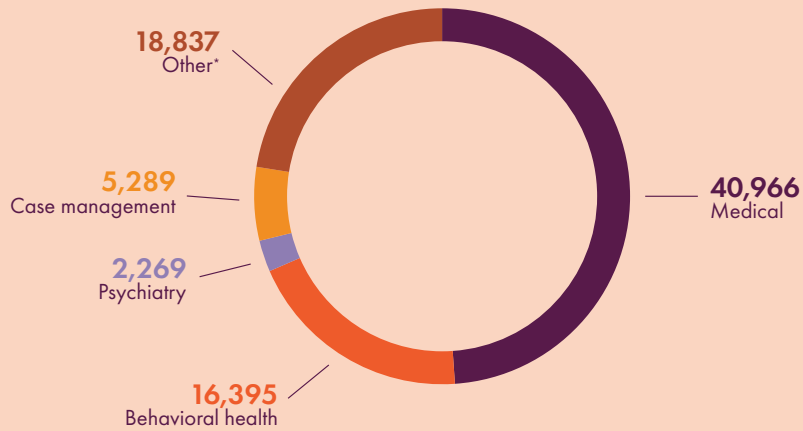
LGBTQ+  
CARE



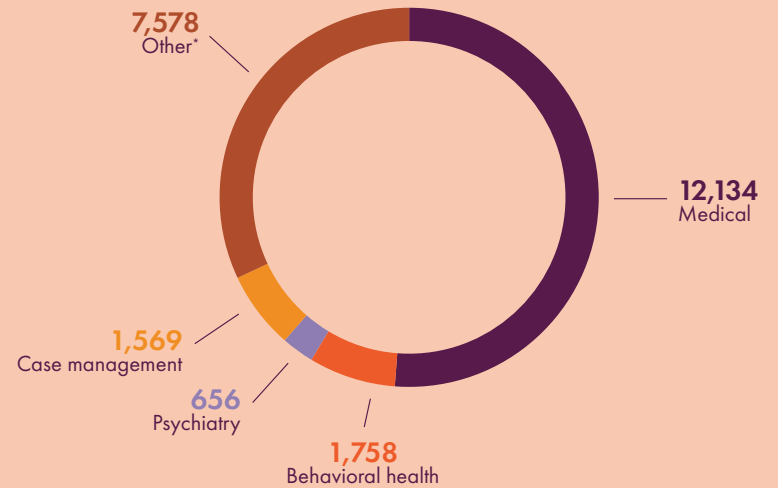
TRANSPORTATION  
TO CARE

# 2022 by the Numbers

**83,786** Total Visits



**12,452** Unique Patients



**12,452**

**PATIENTS SERVED**

**83,786**

**TOTAL PATIENT VISITS**

**10,933**

**VIRTUAL VISITS**

**3,137**

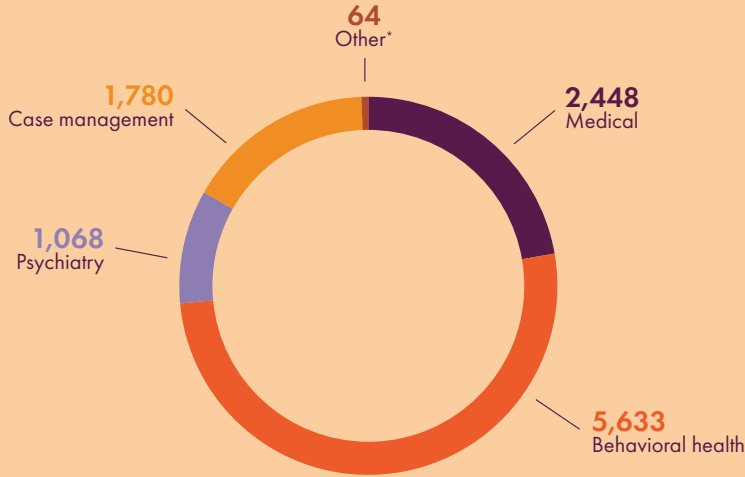
**PEDIATRIC PATIENTS**

**288**

**NEW PATIENTS AT BELL ST.**

\*Community Health Workers, Peer Support Specialist, Lab, MLP, HMH, X-ray, Ultrasound, TPP

## 10,993 Total Virtual Visits



14,987 IMMUNIZATIONS

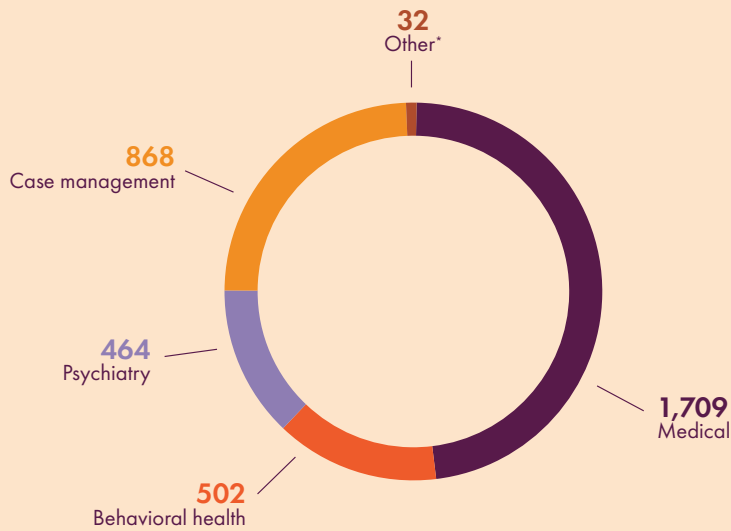
1,038 COVID TESTS

2,951 COVID VACCINES

1,332 X-RAYS

1,088 ULTRASOUNDS

## 2,953 Unique Virtual Patients



# 2022 by the Numbers — continued

## Wrap-around Services

4,582

**CASE  
MANAGEMENT  
ENGAGEMENTS**

Not including housing  
case managers

1,114

**HOUSING CASE  
MANAGEMENT  
ENCOUNTERS**

168

**MEDICAL-LEGAL  
ASSISTANCE  
CLIENTS**

June–December 2022

305

**HEALTHY  
MONEY HABITS:  
FINANCIAL  
EDUCATION  
CLASS**

May–December 2022

2,723

**MEDICATION  
DELIVERIES**

10,975

**HIV+ PATIENT  
VISITS**

92%

**HIV+ PATIENTS  
WITH  
UNDETECTABLE  
VIRAL LOAD** 766

Suppressed / 837 Tested





**Medication-Assisted Treatment (MAT)**

199

UNIQUE MAT PATIENTS

2,014

TOTAL MAT VISITS

**Intensive Outpatient Program (IOP)**

84

IOP PATIENTS  
March–December 2022

28

IOP GRADUATES  
42% Completion rate

**Change Point**

213,866

NEEDLES RETURNED

219,532

NEEDLES DISTRIBUTED

894

NALOXONE DOSES DISTRIBUTED  
447 Kits

424

FENTANYL TEST STRIPS DISTRIBUTED

6,069

STI TESTS  
Chlamydia, Gonorrhea, Syphilis (not including HIV)

300

PREP VISITS

44

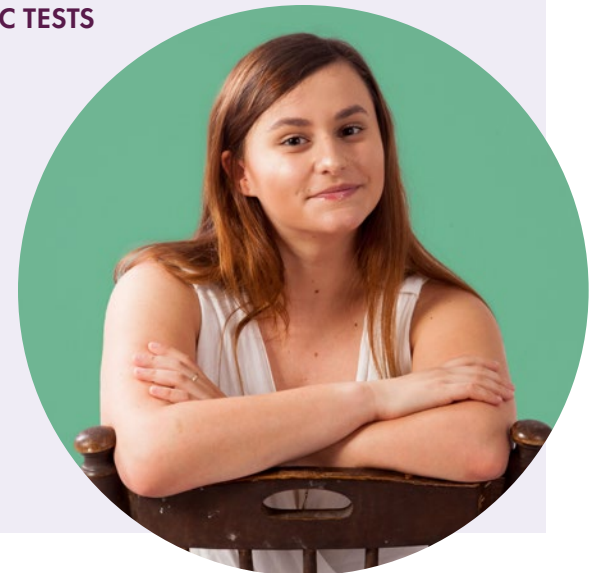
PEP VISITS

2,672

HIV TESTS

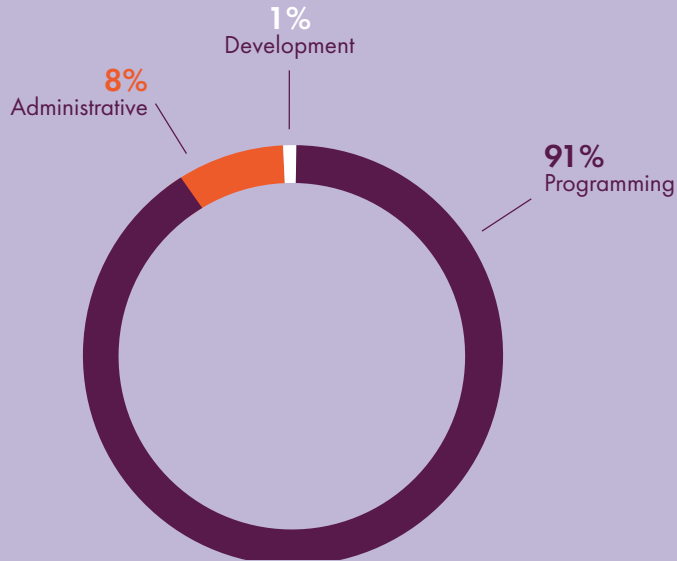
2,721

HEPATITIS C TESTS



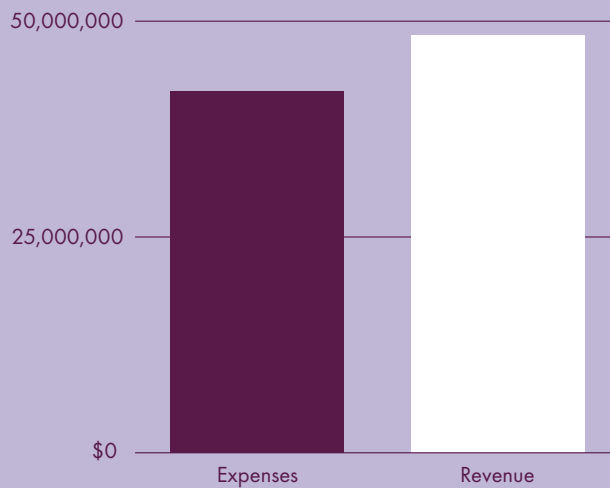
# 2022 Financials

PROGRAMMING	\$67,645,721
ADMINISTRATIVE	\$3,309,514
DEVELOPMENT	\$413,689
REVENUE	\$48,379,319
EXPENSES	\$41,368,924



*“Me gusta mucho porque podemos contar con el servicio en cualquier momento, es muy accesible.”*

—HOPES Patient



# A Quarter Century **Leading Community Health**

**2022, our 25th anniversary year, was a special year at HOPES.** Together, we reflected on memories from years past, hearing directly from patients about the ways our team has changed and even saved their lives.

We celebrated the opening of our new Bell Street Clinic, expanding primary care to now serving nearly 13,000 individuals, children and families. We opened our region's first and only Intensive Outpatient Program (IOP) for individuals without insurance or with Medicaid, which will play a crucial role in expanding behavioral health services to those who need it most and will shape near-future plans for HOPES.

We've continued to take the lead in community health as our state faces primary care provider shortages by onboarding best-in-class providers and incorporating Peer Support Specialists to partner with patients in programs like IOP, Medication-Assisted Treatment and at Hope Springs.

2023 promises big things for HOPES as we look to expand our clinical footprint. If there's anything we've learned over the past 25 years, it's that with the support of this community, anything is possible, our future is bright and together, we will continue to spark hope.

—**Sharon Chamberlain, CEO of HOPES**



# Exceptional Leadership

Makes HOPES a Healthcare Leader

## OFFICERS

**Douglas H. Brewer, CFP — President**  
Senior Financial Advisor, Merrill Lynch

**Cliff Scheffel — Secretary**  
Partner Emeritus, SB Search Partners

**Trudy Larson, M.D. — Vice President**  
Co-Founder of Northern Nevada  
HOPES, Dean Emeritus, School of Public  
Health, UNR; Professor, Nevada State  
Board of Health

**Chris Bosse — Treasurer**  
Vice President, Government  
Relations, Renown Health

## DIRECTORS

**Scott Brenneke**  
Owner, Advanced Asset Management,  
Inc.

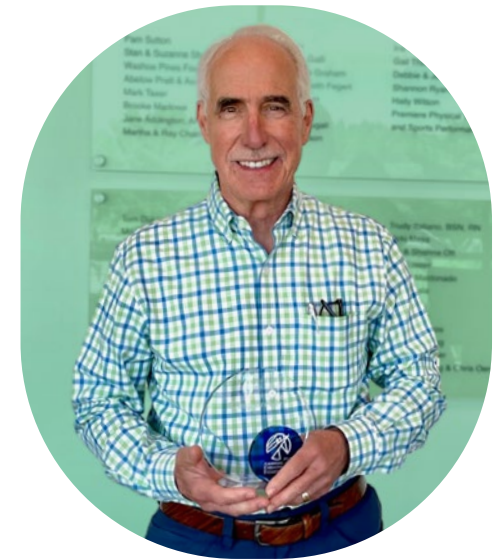
**Patricia Gallimore**  
President, NAACP Reno-Sparks  
Branch

**Theresa Navarro**  
Consumer Advocate, Northern Nevada  
HOPES

**Par Tolles**  
Founder and Principal, Tolles  
Development Company

**Todd Felts, Ed.D**  
Reynolds School of Journalism Professor,  
UNR

**Tom Durante, LCSW**  
Behavioral Health Professional



## Board President, Doug Brewer, Received the Nevada Primary Care Association's 2022 Exceptional Board Leadership Award

Doug exemplifies HOPES' values of kindness, dignity, inclusion, creativity and adaptability. He has guided our work for more than 16 years as we strive to ensure our community has access to the care they need, and that each staff member feels respected and appreciated.

As HOPES looks to expand our clinical footprint to ensure more Nevadans have access to cutting-edge, personalized, innovative care, we're grateful to have Doug's guidance and steady leadership.

Anonymous  
The Dr. Barry Frank Family  
City of Sparks  
The Nell J. Redfield Foundation  
Pearce & Raffealli Families in  
Memory of Roger Pearce  
Kidview Foundation  
Phil & Jennifer Satre

Dick Scheffel Family Charitable  
Foundation  
Robert Z. Hawkins Foundation  
Ron & Susie Codd  
Dr. Joseph Grzymiski III &  
Alexandra Lutz  
Dr. Stephen & Lucia Missall  
City of Reno

K&K Grimm Fund at the  
Community Foundation of  
Northern Nevada  
The E.L. Cord Foundation  
SilverSummit Healthplan  
Heidemarie Rochlin  
The Brett & Deborah Barker  
Foundation  
Dr. Trudy Larson  
Dr. William & Mary Keenan

Renown Health  
Doug Brewer & Victoria  
Matica  
Anthem Blue Cross & Blue  
Shield  
Myron & Julie Hallauer  
Sheila & Cort Christie  
Wells Fargo Foundation  
Charles Schwab Bank

Raley's  
Maureen Mullarkey-Miller &  
Steve Miller  
Vans 385  
Mathew Minshull  
Alexander & Natalie Vogel  
Tad & Barbara Danz  
Don & Natalie Dees  
First Independant Bank

Jesse & Amber Haw  
NV Energy  
Gregory & Leslie Peek  
Susanne & Gloria Young  
Foundation  
Phil & Kristy Zive  
Jerome Edwards  
American Independence  
Foundation

Silver Dollar Court  
Scott & Roger Brenneke  
Bank of America  
Charitable Foundation  
Elizabeth Tenney  
Penny McClary  
Steve Pederson & Patti  
Davidson  
Direct Relief Network

Estelle J. Kelsey  
Foundation  
Hazel Bowen  
Jim & Maureen Cunha  
Thelma B. & Thomas P.  
Hart Foundation  
Heidi A. Loeb  
Susan Mazer & Dallas  
Smith  
Laurel Trust Company

Geoff & Sally White  
Mary Jo Blue  
Christopher Galli  
Vans 186  
Terrance & Carol  
Dinneen  
Berkshire Hathaway  
Home Services  
Drysdale Properties  
Korie Hickel

Rachel Rosemann  
Valerie Cooke & Jamie  
Felten  
Susan Fisher

Cathy & Michael  
Mathews  
George & Linda Burke  
Walter Benoit  
KPS3

Cindy Carano  
Karen Vibe & Karen Goody  
Mary Ann Hartnett  
Mark Hugret & Ray Combs  
Candi & George Peek  
United HealthCare  
Tony & Emma Wynn  
Janet McRoberts  
Jennifer Edwards

Glenda & Donald Mahin  
Dr. Douglas Vacek  
Thomas Brown  
Jack Janney  
Denise & William Kolton  
Physician Claim Corp  
Robert & Kimberley McCart  
First United Methodist Church  
Foundation

Reno Chamber  
Orchestra  
Sam's Club  
Maureen Sheeran &  
James Simmons  
Walmart  
Sam & Sally Males  
Keith & Christina  
Fegert  
Mike & Cheryl Genin

William Bolin & Ross  
Anderson  
THE ROW Reno  
Thomas Durante  
Karen Massey  
Calvin Iida  
A & H Insurance, Inc.  
Amy Saathoff &  
Charlie Moberly

Amy & Brian  
Howard  
Amy & Steven  
Stolarski  
Mandi &  
Mathew  
Larsen  
Donica  
Graham  
Sally Myers

# Leading Community Health

## Our Donors

Karen & Stephen Wiel  
Unitarian Universalist  
Fellowship of Northern  
Nevada  
World Wings International  
Inc.  
Robert Harmon  
Chris & Brian Bosse  
Pat Brackett-Wright & John  
Wright

Robert Harvey  
Kristy Lide  
Sharon Chamberlain  
Debbie DeVay  
Brooke Keyser  
Jane Baudelaire  
The Emerson  
Monica Coughlin  
Marlies Eldridge

Melinda Whitney  
Mary & Lucas Ingvoldstad  
Shane Abdunnur  
Guy & Mary Archer  
Sharon Boersma  
Douglas Hill  
Monica Houghton  
Marilyn Johnson

Lutheran Church of the  
Good Shepherd  
Brooks & Diane Mancini  
Washoe Pines Foundation  
Scheels  
Grace Nichols  
Everi  
Tony & Marian Taylor

Walmart  
Distribution  
Center #7048  
Kathleen Cooke  
Carl Hagen  
Michelle Wagner  
Todd Felts & Tony Avila  
Holly Simental  
Pam & Mike Robinson

Kristen  
Davis-Coelho  
Tida Watkins  
Michael & Betsey Husted

Julie Morris  
Nadine Winn  
Scott Wong  
Cheryl Latham  
Craig Chapman & Frank  
Ozaki  
Jane & Gerald  
McDonald  
Phillip & Petra Valenzuela

Lisa Passalacqua  
Duane Peck  
Ray & Martha  
Chamberlain  
Katharine Dwyer  
Coffee N' Comics  
Meg Price  
Allisa Rivara  
Ann Silver

Mark Taxer  
Marsha Brannon  
Creighton Skau & Beth  
Kiehn  
Julia Ratti & James  
Cavanaugh  
Karen Rehne  
Valerie Burkhart  
Kent Ervin & Gary  
Zaepfel

Allene Andress  
Sarah & Sherman  
Boxx  
Phelps & Krista Kip  
Nicole Lamboley  
Kenneth Paxton  
Jason Roche  
Taylor Made  
Solutions

Robert Peyton  
Katrina Fogel  
Larry Schneider  
James Wilson  
Jim Barcellos & Paul  
Devereux  
Emily Bennett  
Jeremy Duke  
John & Jean Ferris

Ursula & William  
Funk  
Ann Harrington &  
Gregory Griffin  
James Kenyon &  
Martha Baring  
Robert Lissner  
Timothy Musick  
Dr. Brian  
Passalacqua

Michael & Joan  
Pokroy  
Floyd & Nannette  
Rowley  
Cliff Scheffel &  
Gayle Rydinski  
May Shelton  
Beverly Shlapak  
Jill & Par Tolles  
Theresa Watts

Whyman Family Fund  
held at the Parasol  
Tahoe Community  
Foundation  
Paulina Connelly  
Stacey Rice  
Gonet Philip  
Krista Anderson  
Margaret Brown

Bruce & Christie  
Gescheider  
Jim & Betty Hulse  
John O'Gorman  
Meri Shadley  
Kate Ault  
Jerry Trigueros  
Kayla Shannon  
Danny Sierra

Raquel Ramirez  
Chuck & Candice Reider  
Hookava  
Casey Baker  
Donald & Carolyn  
Cleveland  
The William Nork Family  
Mona Issa-Marmolejo

Jeffrey & Patricia  
Millman  
Great Basin Brewery  
Company, LLC  
Kaitlind Becker  
Lois Chanslor  
Robert Sheridan  
Black Rabbit Meads LLC  
Jeffrey Hanson

Georgia & James Kinninger  
Susan Gallup  
Kendrick Taylor  
Loretta Terlizzi  
Marie Kresinske  
Jennifer Bowler  
Allen Johnson  
Connie Schuett

Eyehook Gallery  
Connie Kittell  
Carol Meyer  
Meredith Tanzer  
Amanda Prina  
Eihan Ris  
James Stegman  
Karen & David Witherow

Patty Dickens  
Twentieth Century Club  
James Bernardi & Duane Dooley  
Steve & Dionne Bloomfield  
Jeff & Mary Shaffer  
Duke Vermazen  
Abigail Valdez

Marcy Benner  
Alicia Lindsay-Dietrich  
Theresa Navarro  
Maria Molina  
Jennifer Farfan  
Rachel & Jason Stevens  
Deb De Lancey  
Elisa Kleitman  
Nancy Petersen

Amazon Smile  
Karen Aplin  
Leonardo Bunuel-Jordana & Jodi Schumacher-Bunuel  
William & Rachel Gallegos  
Michael & Janet Gilbert  
Darlene Huff

William & Carol Beth Isaëff  
Arthur Johnson  
William McPherson  
Jane Milldrum  
Angeline Peterson  
Nancy Podewils-Baba  
Elisa Ross

Terri Schultz  
Lillian Tallman  
Michael Tanzer  
Charlotte Voitoff  
Ryan Weeks & Daniel Beltran  
Jessica Bowden  
Maria Carrillo-Silva  
Sandy Esquivel

Margarita Jimenez  
Kylie Soares  
Ivonne Veloza  
Jingjing Xu  
Lynette Gardner  
Megan Barrenchea  
Brad & Carissa Snedeker  
Kirk & Cathy White

Jeanette & Robert Berry  
Michael & Jacqueline Hillman  
Vicki LoSasso  
Sharon Marie Wilcox  
Maria Martinez  
Jovana Ramos  
Gerald Heston

Leah Sanders  
Kathryn Barkow  
Karla & James Brune  
Jowdy Burke  
Elizabeth Conte  
Charlotte Cox  
Lindsey Doolittle  
Randall & Juliette Fletcher

Julie Gwin  
Deborah Halleran  
George Hatjakes  
John Helmreich & Nancy Ritchie  
Merritt Henson  
Wayne Jauer  
James & Allyson Kreimer

Lucinda Long & James Barker  
Christopher Mixson  
Carol & Robert Olmstead

Gregory & June Osborn  
Lindsey Panton  
Melissa & Robert Rynders

Susan Scalzo  
Kerry Seymour  
Don & Rachel Tatro  
Cary Yamamoto  
Maria Barajas-Lopez  
Sierra Vice  
Ivy Spadone  
John Fry  
Healing One

Robert Peterson  
Adonica Iverson  
Summer Mather  
Mary Duffy  
Carol Hayne  
Martha Durney  
Thomas Clark  
Kelly Duncan

Lynn Harris & David Folchi  
Carson Victory Rollers  
Michele Kiser Pearson & Steve Pearson  
Alan & Nancy Maiss  
Martha & Steven Matles  
Margaret McCall  
Sara Mowery

Grace Schoenfeld  
Bernice Starr  
Trisa Vincent  
Sarah Peters  
Ashleigh Marglin  
Leann McElroy  
Ana Pina  
Jose Chinas

Wild Island Family Adventure Park  
Nick & Suzanne Bartone  
Nothing To It! Culinary Center  
Mary Holman  
Reno Aces  
Marlyn & Roger Scholl

Christine Kratzer  
Guadalupe Anguiano  
Reno Little Theater  
Johnathan Chapin  
Teresita Espana-Jimenez  
John Etchemendy  
Marcela Fejer  
Sean McHaney



Mikyla Miller  
Rebecca Reyes  
Yashila Sanchez  
Eleni Sexton  
Kaitlin Shonnard  
Baillie Stewart  
Elaine Davis  
Monica Martinez

Ranger Industries  
Rosalind Bedell  
Constance Bergquist  
Katherine Cleveland  
Julie Foster  
Melanie Foster  
Jennifer Goto  
Jeffrey Hardcastle  
David Hoang

Jacqueline Hogan  
Robyn Hylton  
Tori King  
Jennifer McClendon  
Jeffrey Mitchell  
Laura Moore  
Albert Norman  
David Orlady  
Shannon Peterson

Lynette Ratzlaff  
Victoria Stewart  
Michel Tissier  
Bryan Torppa  
Betty Martin  
Olusegun Adeyemi  
Stephen Alila  
Elizabeth Andal  
William & Grace Balsi

Cynthia Bansen  
Timothy Bardsley  
Tamara Baren  
Steven Barnes  
Linda Barrenchea  
Daniel Bartley  
Howard Bennett  
Sara Bertram  
Richard Bissett

Casey Baker  
Rita Boyd  
Peter Broughton  
Sarah Bush  
Katie Cartwright  
Stephanie Christensen

Carole & Sam Coleman  
Gary Colon  
Kathleen Conaboy

Doyle Cornelius  
Spencer Davidson  
Stephanie Davidson  
Darrell Dion  
Charles Durante

Delmar & Carolyn Evans  
Betty Felts  
Karen Fleming  
Shelia Freed  
Mindy Fugett  
Patrick Fuller  
Danny Getzoff  
William Glaser  
Kelley Glogovac

Susan Grobman  
Mary Gunsalus  
Fred Hahn  
Thomas & Peggy Hall  
George & Carole Hess  
Patrick Hickey  
Karen Hill  
Bison Hubert  
Mary & Joseph Ingvaldstad

Sharon & Lawrence Irvin  
Denise & Randy Jacobsen  
Carol Lehnert  
Andrea Lenz & Scott Faulkner  
Kristin Loebbecke  
Nancie Malmquist  
Melissa Marsh

Janet Nelson  
Joyce Newman  
Taylor & Michael Noyes  
Eric Odle  
Paromita Pain  
Daniel Paylor  
Kathy Picollo  
Mary Popish

Deborah Ribnick  
William Rowley  
Deborah & Stephen Salaber  
Sharon Scott & Keri Fisher  
Dana & Brian Shelton  
Margo Sheltra

Raj & Visha Siddharthan  
Stuart Skalka  
John & Kathy Tatro  
Washoe Public House  
Terence & Frances Terras  
Atlantis Casino Resort  
Susan Toner

Kamin VanGuilder  
Joann Wallace  
Kim Webster  
Lindsey White  
Ruth & William Wright  
Soohyun Yoon  
Jesse Gonzalez  
Yocelin Centeno  
Kimberly Colegrove

Isabel Ibanes  
Paul Terlemezian  
John Rejebian  
Brian Fitzgerald  
Anne Stilwell  
Ronald McFarlane  
Ruben Olivares-Escobedo  
Herlinda Hernandez

Ivonee Martinez Rodriguez  
William Rice  
Peggy Busick  
Carol Bond  
Liz & Russell Chamberlain  
Lisa Fisher  
Johnny's Ristorante Italiano

La Cucina Italian Eatery  
William & Lucy McGuire  
Vauna Pipal  
Viridiana Castillo  
Diana Ruiz-Gonzalez  
Donald & Patricia Gallimore  
Barbara Eiche

Aaron & Nicole Glass  
Barbara Oppio  
Nevada Museum of Art  
Thomas Kelly  
Bruka Theatre  
Sabrina Gonzalez Avila  
Benedict Kargbo

Alexis Perez  
Andres Sanchez Herrera  
John Menicucci  
Alec Fairfield  
MaryLee Fulkerson  
Rhiannon  
Garl-Nabarro  
Daniel & Kathy Hannah

Patty Hermanns  
Mike Jones  
Susan & Phil Kaiser  
Robert & Marguerita Kelley  
Abby Lebbert  
Lynne Molini  
Bryan Payne

Donald & Mary Alice Pisani  
Michael Reed  
Charles Robertson  
Linda & James Sorbi  
Susan Stewart  
Karen Walker  
Michael Benson

Richard Adler  
Patrick Allen  
Larry Andrus  
Wesley & Gaylelynn Ayers  
George Baba  
Theresa Bell  
Tyler Bolen  
Marie Boutte

Jim Bruno  
Trudy Brussard  
Sylvia Cannell  
Marcia Chamberlain  
Brenda Cicerone  
Chris Colberg  
Theresa Cooke  
Taylor Davidson

Paul & Pamela DuPre  
Kimberly English  
Thomsen Family  
Lindsey Felsch  
Bailey Felten  
Eclipse Pizza  
Jennifer Gamroth  
Heartfelt Painting

Sherellen Gerhart & Jonathan Sherwood  
Jayme Geston-Ward  
Karin & Fred Gladding  
Robin Gray  
Cynthia Harris  
James Hengels & Donald Gardner  
Linda Hovan

Steven & Nicki Humphrey  
Michelle Johnson  
Eva Jorges  
Nicholas Kearney & Jeff Auer  
Cory Kleinschmit  
Anessa Krejci  
Alan Larsen

Andrew Larsen & Kendall Roth  
Jennie Larsen  
Renate Lawrence  
Gina Lebbert  
Austin Lee  
Peg's Glorified Ham n Eggs  
Rhonda Legge

Madelynn Linke  
Annette Luckow & William Liebel  
Francine Mannix  
William Mantle  
Marilyn McKeegan  
Douglas McMillan  
Katie Mikolichuk  
Mimi's Cafe

Russell Morgan  
Rhona Nicora  
Teril & David Norman  
Tiffany Ogle  
Melissa & Stephen Olsen  
Jessica Parfitt  
Sandra & Amy Paul

Nicholas Pavone  
Janice & Richard Petersen  
Joseph Phelan  
Lauri Pipkin  
Cindi Powell  
Krystal Pyatt  
Stephanie Rue  
Safeway Inc.

Dale & Linda Sanderson  
Niki Schraub  
Catherine & Ed Smith  
Bonnie Strader  
Nugget Casino Resort  
David Thackery  
Chris Thomassian & Naunie Gardner  
Katherine Tieszen

Marilynn & James Uhart  
Jeff Urmston  
Salon Glow  
Shirley Whitcome  
Carl & Dianne Wilfrid  
Blanca Martinez Gutierez  
Adriana Orozco  
Jill Berner  
Ofelia Hurtado

Davene Kaplan  
Valeria Davis  
Jennifer Deleon  
Jean Myler  
Sara Robbins  
Christy Tews  
Robert Gomberg  
Joe Merkin  
Irene Miller

Sandra Boxx  
Alyda Dickens  
Erica Mosca  
Nothing Bundt Cakes  
Traci Ahlstedt  
James Emme  
Charles Goff  
Justine Holman  
Prism Magic

Wendell Norris  
Charles Sheeley  
Lynn Williams-Farrer & Kaelyne Day  
Laura Chapelle  
Yogurt Beach  
Joan Baxter  
Linda Devom

Nancy & Charles Dodson  
Kathy & Fred Jakolat  
Katherine Oliver  
Jenae Payne  
Brianna Rettig  
Mary Austin  
Loretta & Clifford Baughman

Shelley Beckett  
Jaylene & William Berry  
Joy Betz  
Elizabeth Braman  
Julie Brand  
Stanley & Elizabeth Burroway  
Jillian Buschine

Buenos Grill  
Richard Campbell  
Thomas & Janice Carnahan  
John Casey  
Susan Cothren  
Michele Dardis  
Melony Davidson  
Martin Deaver

Ellen & Robert Driscoll  
PJ & Co  
Rebecca Goff  
The Union  
Robert & Cheryl Haynes  
Marilyn Hewitt  
George & Marsha Jackson

Paula Kerns  
Judi Kosterman  
Sally Kuch  
Ralda & Leroy Lindstrom  
Alvaro Maldonado  
Mary Merry  
Reynold Nishio

Donna Olsen  
Satterfield  
Gail Orris  
Isabelle Pearce  
Diana Russ  
James Salaz  
Lisa Seeling  
Anthony Solferino  
Carole Sorenson

Laurie Squartsoff  
Alfred Stoess  
Van Vinikow  
Holly Waltz  
Heather Wilk  
Ophelia Wilson  
Cheryl Wagner  
Bruce Robertson  
Martha Ellis

Jeffrey Kirst  
Susan & Eulis Landrith  
Marcia Lopez  
BJ's Restaurant & Brewhouse  
James Wilson  
Drew LaVigne  
Elizabeth Alvarez  
Rama Raja  
Tori Barrenchea

Maribel Cuervo  
Barbara Korosa  
Sally Pappas  
Harriette Treloar  
Emily Andrews

Sierra Expeditionary Learning School  
Sierra Hunter  
Jazmin Lozano  
Itzel Perez  
Jeff Wood

**“Thank you for providing a safe place to talk about grieving and loss.” –HOPES patient**

## IN HONOR OF

Sandy Boxx  
Ray & Martha Chamberlain  
Sharon Chamberlain  
Ray Combs  
John Dare  
Patti Davidson

Donald Derby  
Todd Felts  
Wendy Franco  
Ben & Kristen Gallagher  
Deborah Jean Hohlfelder

Charlie Holland  
Monica Lake  
Thomas Lee  
Larry Mastropieri  
Jim McMaster  
Sharon Morse

Theresa Nishio  
Liana Ris  
Jamie Stetson  
Karen Wong

## IN MEMORY OF

Harold R. Gunsalus  
Michael Ryan Hammon  
Jonze

Dr. William Keenan  
Sally Myers  
Roger Pearce

Richard Rehne  
Adam Robertson  
Matt Shepard

Bill Thyrt  
Dana Jennie Winn  
Jessica Younger





[nnhopes.org](http://nnhopes.org)